



# NEWCASTLE UNIVERSITY MOUNTAINEERING CLUB

## Information Pack 18/19



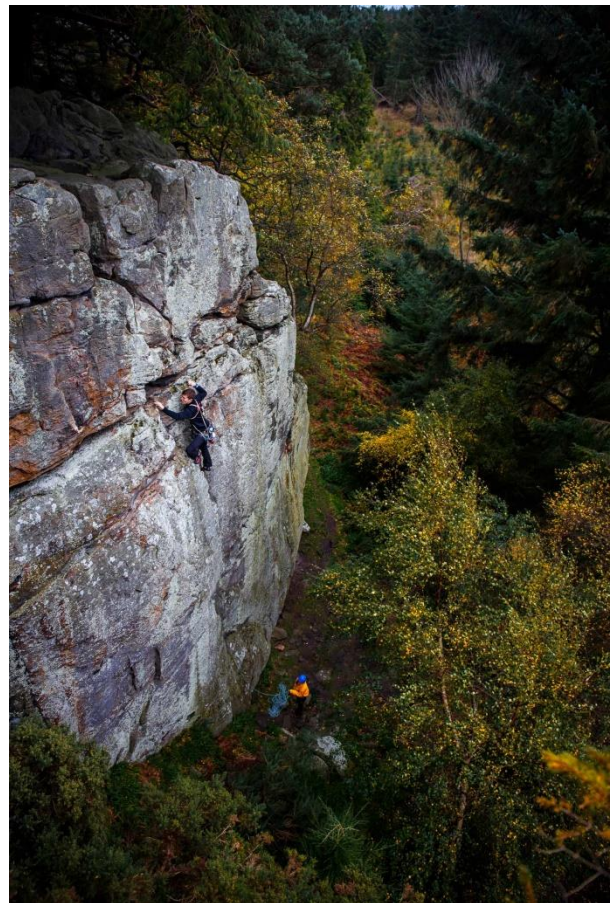
Hi everyone,

Hope you're all enjoying Fresher's week and feeling ready for a great year of climbing! To returning members, welcome back! To prospective members, we're a friendly group of students who love all kinds of climbing and mountaineering, from complete beginners, to alpine gods and bouldering beasts; and we hope you join us for some climbing this year!

This year, instead of handing out a paper booklet, we thought we would give you a more useful document packed with information about the coming year, including the dates of all the trips and a brief introduction to the club and committee for those new members.

## **Contents**

- 1) What we do
- 2) Calendar
- 3) Fresher's Events
- 4) This Year's Committee
- 5) Weekly Meets
- 6) Weekend Trips
- 7) Socials
- 8) Competitions
- 9) Joining NUMC and its benefits
- 10) Useful Links



## What We Do

So you're interested in mountaineering and climbing? You've come to the right place. As a club we have members who have experience in pretty much every discipline that comes under those terms. Whether it's indoor climbing, trad climbing, sport climbing or winter climbing there will be opportunities to try these throughout the year. If you don't know what any of the above means - don't worry!

NUMC is a super friendly group of people who all have a passion for some form of climbing. We meet every week at various times to go bouldering and roped climbing. We also run three weekend trips in the first term where we visit three iconic climbing locations (Peak district, Lake District and Yorkshire) and two winter trips up to Scotland where we pay for an instructor to take you out and teach you how to be safe in the mountains. We cater for all abilities so even if you're completely new and have no idea what you're doing, you're welcome to join.

Our club is more of a social club and although we do compete in BUCS and have a few other competitions we are always very light-hearted and climb for fun. You don't have to be the best climber in the world to enjoy being part of NUMC!

## Calendar

Here are some of the key dates for the coming year. We may also have some other trips but these are yet to be decided.

<b>Event</b>	<b>Date</b>
Fresher's Climbing Taster Session	26 <sup>th</sup> September
Fresher's Outdoor Day Trip 1	29 <sup>th</sup> September
Fresher's Outdoor Day Trip 2	30 <sup>th</sup> September
Fresher's Bouldering Taster Session 1	1 <sup>st</sup> October
Fresher's Bouldering Taster Session 2	2 <sup>nd</sup> October
Fresher's Meal	4 <sup>th</sup> October
Peak District Weekend Trip	12-14 <sup>th</sup> October
Lake District Weekend Trip	26-28 <sup>th</sup> October
Yorkshire Weekend Trip	9-11 <sup>th</sup> November
Scottish Winter Trip 1	25-27 <sup>th</sup> January
Scottish Winter Trip 2	8 -10 <sup>th</sup> February
The NUMC End of Year Ball	16 <sup>th</sup> March



## **Fresher's Events**

We have loads of opportunities for you all to try over the coming few weeks to give you a taste of what it's like being part of NUMC. All the fresher's events are open to all Newcastle University students (including non-fresher's that aren't already part of the club) and you **DON'T** have to be a paid member.

### **Saturday 29<sup>th</sup> and Sunday 30<sup>th</sup> Outdoor Taster Day Trips**

[Saturday Facebook Event](#)

[Sunday Facebook Event](#)

At the end of fresher's week we are running two day trips to local crags to let you sample outdoor rock climbing and bouldering. The trips cost £14.50 and we will provide all the gear you need. All you need to bring is a packed lunch and suitable clothing for the outdoors.



We will be meeting outside the SU both days at 09:00 and return to Newcastle University in the early evening.

Tickets can be purchased [here](#).

### **Monday 1<sup>st</sup> and Tuesday 2<sup>nd</sup> – Indoor Bouldering Taster Sessions**

[Facebook Event](#)

Fresher's week's over but we still have some taster sessions for you. This Monday and Tuesday we are running two indoor bouldering sessions. you can come to either or both if you're really keen. We will be meeting outside the SU at 18:00 on both days before getting the metro to Climb Newcastle where we will let you loose on the centre and you can give indoor bouldering a go.



It will cost £6.50 + £3 for shoe hire (The club will provide as many shoes as we can free of charge, though we only have so many so you might have to hire shoes)

If you are planning on coming can you please register using the following link so when you arrive you can start climbing straight away.

<https://www.climbnewcastle.com/get-started/registration.html>

## **Thursday 4<sup>th</sup> – Fresher's**

### **Meal**

#### **Facebook Event**

This is our first social event of the year and a great opportunity for members old, new and prospective to get to know each other. And how better to do that than over a huge all you can eat buffet!

The plan is to meet at Grey's Monument at 18:30 and then head over to Lau's 202 Buffet House in a big group. The meal will probably last until around 9/9:30 and will include a free climbing based raffle! After this, for anyone that wants to, we'll be heading into the Toon for some drinks!

It is £15.50 per head and you can buy your tickets through the [PayPal link!](#)





## This Year's Committee

### **President – Oliver Grady**

Hi I'm Ollie and I'm a 4<sup>th</sup> year Chemistry Student. I've been climbing for over 10 years and in this time have climbed all over the UK, have summited a fair few mountains in the alps, and explored some of Iceland's largest glaciers. I love all aspects of mountaineering especially trad climbing, Scottish winter, and alpine climbing. I'm also a climbing instructor and a Landscape and Adventure photographer so if you're keen to learn how to climb or want some cool climbing photos I'm your man. I'm always happy to chat and if you have any issues or suggestions for the club come see me I'm always around.



### **Secretary – Catherine Bonn**

Hi! My name is Catherine, and I'm a second year PhD student in Dermatology. I started bouldering in 2016 and have grown increasingly keen ever since. I joined NUMC last year, learning to lead trad climb and trying Scottish winter climbing with the club. I loved it so much I've been on every trip since I joined! I'll often be found at The Valley bouldering wall (I <3 boulders) so come and say hello if you want to know more about getting involved in the club.



### **Treasurer – Rowan Page**

Hi I'm Rowan and I'm the treasurer this year. If you come along to the climbing wall or any of the trips, I'll probably be there. I've been climbing for about 16 years, which means I'm an absolute beast at this point. I'm also doing some mechanical engineering while I'm here, but my new year's resolution is to go to fewer lectures for more climb time.



### **Welfare Secretary – Eloise Bull**

Hi, I'm Eloise, this year's Welfare Sec, so don't hesitate to come and find me if you're struggling with anything! I've been climbing for just over a year and can't get enough, my favourite climbing experience has to be spending a week bouldering in Fontainebleau trying some epic climbs and terrifying top-outs.



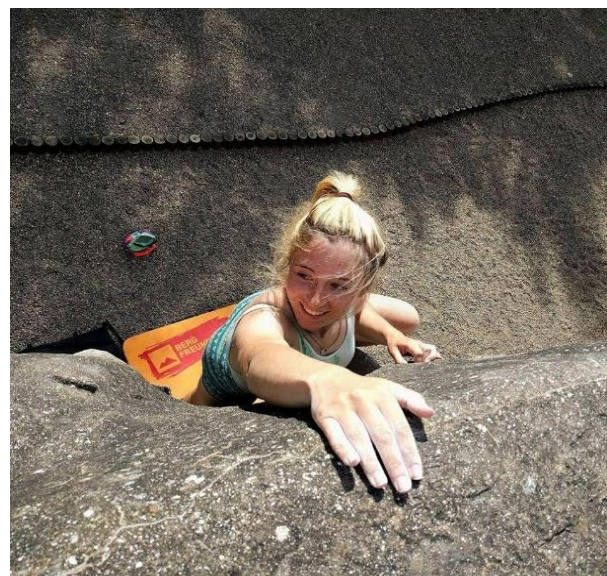
### **Gear Secretary – Jay Edwards**

Hi! I'm Jay and I study medicine at Newcastle. I'll be your gear sec for this year. You'll often find me dwelling in my natural habitat of the local climbing centre or browsing the internet longingly looking at climbing gear that I definitely don't need but definitely want. I started climbing a few years ago and since joining NUMC last year, I have fallen in love with all aspects of climbing and mountaineering, especially Trad climbing and gnarly Scottish winter days! Come and say hello!



### **Social Secretary – Elle Partington**

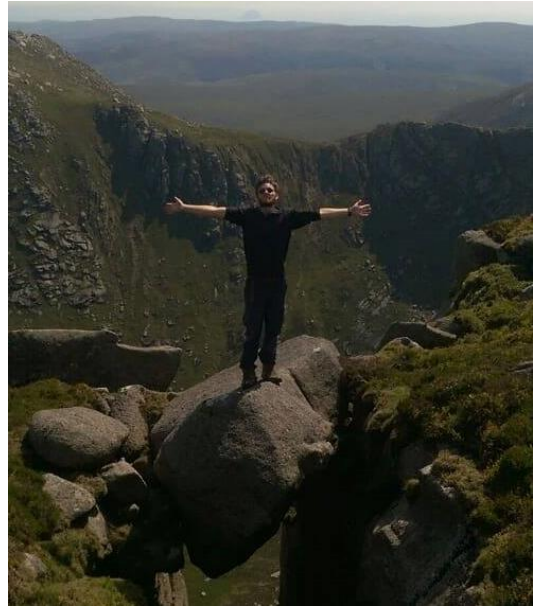
Hey, my name's Elle and I'm a third-year medical student! Since taking up climbing 2 years ago I've climbed at venues all over the UK and Europe, somehow fitting in 3 trips to Font (if you've not heard of it yet, you will!). I'm mainly into bouldering and try to get outside whenever I can, there's some great crags in Northumberland so you're in for a treat! My favourite climb up here is Slapper at Shaftoe and elsewhere is Gulliver Kante in Magic wood! My plan is to be able to crush the boys by the end of the year, so you'll find me at the wall 5/6 days a week, come say Hi!





## **Social Secretary – Ruairidh Hardy**

Hi, I'm Ruairidh, one of this year's Social Secs. I started climbing when I joined NUMC 3 years ago and am now in my last year of Naval Architecture. I love the social aspect of climbing, be it hanging around a crag on a sunny day or going to the pub after our weekly bouldering meets. I'm looking forward to meeting all you newcomers and organising fun things for us to do! I've gained a lot of great memories from the club, from club trips all over the UK to great nights out. My best climbing memory though, is going on a trip to Arran, my childhood favourite Scottish island, with friends from the club to do the epic mountain route that inspired me to start climbing!



## **Coach – Ollie Knowles**

Hello there, my name is Ollie and I'm a 4<sup>th</sup> year Medicinal Chemistry student. I've been climbing now for 4 years and have taken a keen interest bouldering and training since coming to Newcastle in 2015. You'll be able to find me most evenings at the Valley climbing or training, and out bouldering in Northumberland on the weekends, trying hard! I'll be offering coaching at the weekly bouldering meets on Mondays at either the Valley or the Pool (in a real wavy bright blue tee), and running training sessions on Thursdays for those keen on getting stronger, and also for those interested in taking part in the BUCS bouldering competition.



## **Media Secretary – Dom Harris-Jukes**

Hey I'm the dude in charge of stash this year, Dom. Hit me up if you've got any great ideas for 'climbing' clothing. When I'm not climbing I'm studying Mechanical Engineering in my second year. In terms of climbing I'm mostly a gym rat and spend most of my time bouldering inside when there're no lifts going. My favourite climbing experience has to be any Peak Limestone bouldering with Knowlesy. Peace.





## Weekly Meets

The club meets twice a week at different indoor climbing walls in the Newcastle area. On Monday evenings the club goes bouldering at Climb Newcastle's Centres (we alternate each week between The Valley and the Pool. Entry cost is either £6.50 or £7.50 depending on the venue.

We usually meet at the centre at 7pm and then after if people want to, usually go to a local Pub.

On Wednesdays we go Roped climbing at Newcastle Climbing centre. This year we will be meeting at the centre at 6pm and climbing for as long as you like. Entry cost is £6.50 on a Wednesday.

## Weekend Trips

The club runs different weekend trips to various climbing locations around the UK. Beginners and experienced members are welcome. Club vehicles leave from outside the Student's Union after lectures finish on the Friday evening and drive members to the bunkhouse/accommodation. We then get back to Newcastle late Sunday evening after climbing in the day and playing games and sleeping in the bunkhouse for 2 nights.



We have three weekend trips planned in the first term. Our first trip will be based in the Peak District where we will sample some of the best gritstone Trad climbing and bouldering available in the UK. We will be staying In Hope Farm Bunkhouse and getting 2 full days of climbing as well as great evening games before heading back to Newcastle.

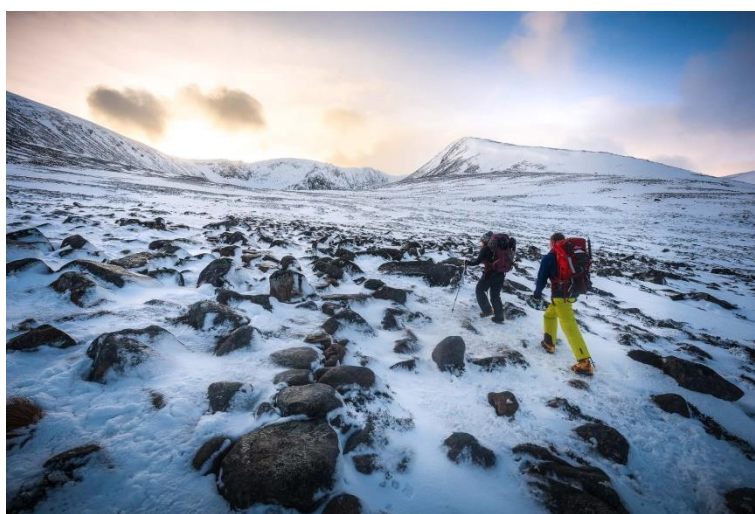


Our second trip will take you to the Lake District where we will go multi-pitch climbing on big mountain crags or bouldering in the valley bottoms, and if the weather doesn't allow us to climb we will go out and explore some of the fells on foot. We will be staying In a Bunkhouse in the Wrynose Pass and getting 2 full days of climbing as well as great evening games before heading back to Newcastle.

Our Final weekend trip takes us to Yorkshire on another gritstone adventure, where we will climb at Brimham Rocks and Almscliff, which are trad and bouldering heavens. We will be staying In Grantley Village hall and getting 2 full days of climbing, as well as great evening games before heading back to Newcastle.



After Christmas we have two winter trips to the Cairngorms planned, where we go out and do some mixed winter climbing and also offer a great opportunity for beginners to try out and experience what it's like being out in the cairngorms in winter. The Club pays for an instructor to take 6 beginners out and teach you everything you need to know to be safe in the winter environment at no extra cost to you. The winter skills course, as it's called, is free to our members (you just need to pay for the cost of the trip) and is a great opportunity as hiring an instructor to take you out in winter usually would cost you hundreds of pounds.



## Socials

We have a wide range of drinking and non-drinking socials across the year including the fresher's meal, Christmas meal, Quilliam's film night, Pub trips after bouldering, and many others that will be organised in due course.

The main social event of the year, held on March 16<sup>th</sup> is the world famous NUMC Ball. It's held overnight in a castle and people who have left the club 10 years ago still join us from across the country – it's that good. Activities include a sit down meal cooked by the best chefs we could find (i.e. our committee), a ceilidh, announcement of the new committee and more free wine and beer than you can shake an ice axe at.





## Competitions

Although mainly a social climbing club we have a few opportunities to let your competitive side out. Keep an eye out throughout the year for more information about these.

### BUCS

This year we will be competing in BUCS (British Universities and Colleges Sport - the body in charge of hosting inter-uni competitions)! The bouldering competition will again be held at The Works in Sheffield in February 2019, so if you don't feel comp-ready yet there's plenty of time to prepare! Newcastle University traditionally does very well in BUCS. Last year we had one of our team members Jake come 6th, narrowly missing the finals, and the boys' teams coming 6<sup>th</sup> overall

### Inter Uni Bouldering Competition

This is a lot more of a social competition held at The Valley in Newcastle where Newcastle, Northumbria and Durham compete against each other. First organised last year the competition was a great success with NUMC scoring the top 6/7 places and winning the comp. This competition isn't too serious and is great for everyone in the club that wants to experience competition climbing without the any of the pressure. To top it all off last year was fancy dress!



We are also planning a lead climbing competition and Climb Newcastle run a Winter Bouldering Series of 5 competitions, and the nationally renowned ASBO so there are plenty of events to keep the competitive climbers happy.



## **How To Join NUMC and its benefits.**

Any Newcastle University Student or Staff can join NUMC as long as you can log into the SU website.

**To join NUMC head to our NUSU Page found [here](#) and under our logo you should see the option to buy membership.**

**Membership costs £37 and includes the following benefits.**

- Access to our heavily subsidised weekend trips including the winter skills course we run on our winter trips.
  - Specialized climbing and outdoor sports insurance through the BMC
  - Membership to the BMC (for those that come on the outdoor trips)
- Opportunity to complete in BUCS Bouldering in Sheffield as part of team Newcastle
  - Discounted entry at local climbing walls on Club visit days
    - Access to the club gear on club trips and meets
  - Free Coaching from our very own Coach Ollie Knowles
  - Discounted tickets to the unmissable NUMC Ball
- 15% discount at Cotswold Outdoors (all discount codes will be emailed out to members)

## **Useful Links.**

[NUMC Official Facebook Page](#) – our official page where all our official news is posted.

[NUMC Chat Facebook Page](#) – General NUMC page where anyone can post about anything climbing related.

[NUMC Official Website](#) – Our website giving a general overview of what we do.

[NUMC Instagram](#) – Follow us to see everything we get up to.

[NUMC Safety Policy](#) – All members need to read this and understand it before becoming a paid member.

[UKC](#) – UK Climbing is the go to place for climbing news, logging your outdoor climbs and all sorts of other useful things such as gear reviews etc.

[The BMC](#) - The British Mountaineering Council (BMC) is the representative body that exists to protect the freedoms and promote the interests of climbers, hill walkers and mountaineers, including ski-mountaineers.



[The NMC](#) – The Northumbrian Mountaineering Club is a Newcastle and Northumberland based mountaineering/climbing club. Our members are of all ages and abilities, but share a common enthusiasm for climbing, the hills and mountains. Basically the Grown up NUMC and many of our old members join the NMC at some point.

Oliver Grady Photography, [Website](#) / [Facebook](#) - Our very own President is also a photographer and usually takes lots of photos on club trips so check his FB page and website after trips to see his photos. He usually shares them on the NUMC Facebook pages.